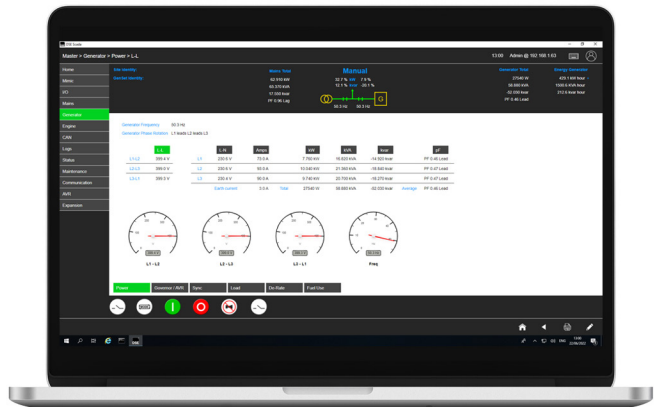




DSESCADA



Release Date: 25.11.2025 - v3.2.0	
Change Category	Explanation
Function Added	- Addition of modbus map page allowing for the definition of custom modbus registers and ancillary equipment tab to assign modbus map's to 3rd party devices
Support Added	- Compatibility added for DSEG8900
Software Update	- Continuous improvements to DSESCADA
Feature Added	<div>- Widget compatibility with ancillary equipment</div> <div>- Addition of expression instrument in widgets</div> <div>- Addition of configurable formats for custom labels</div> <div>- Image button can be configured with custom commands</div> <div>- Data can be logged for registers defined in modbus map as well as those in configuration suite</div> <div>- Display frame now allows for multiple layouts, with the options to cycle between them</div> <div>- Addition of navigation type property menu item</div> <div>- Widget visibility logic and layout picker now work using a conditional picker</div> <div>- Enum builder allows for the creation of custom enums in modbus map and dropdown widget</div> <div>- Addition of asset selector in conditional rule selector that can override the asset selected in widget</div> <div>- Addition of server and client, date and time instruments to the label widget</div>
Release Date: 08.09.2025 - v3.1.24	
Change Category	Explanation
Software Update	- Continuous improvements

Release Date: 25.03.2025 - v3.1.1	
Change Category	Explanation
Support added	<ul style="list-style-type: none"> - Update to include DSE8610 MKII and DSE8660 MKII modules - Update to include DSE2160 and DSE2170 expansion modules within the default DSEG8600 SCADA interface
Release Date: 28.02.2025 - v2.4.0	
Change Category	Explanation
Software Update	<ul style="list-style-type: none"> - User definable image library added to project properties screen. Images can be uploaded and named by the user - New image selector pop up added - Menu item widget now supports additional layout screens in pop up window as well as on main user screen - Combined alarm box added to alarm widget - New breaker widget added to allow for adding breakers that work from a digital input or output
Release Date: 30.01.2025 - v2.3.0	
Change Category	Explanation
Software Update	<ul style="list-style-type: none"> - Continuous improvements
Release Date: 06.03.2024 - v1.7.12	
Change Category	Explanation
Software Update	<ul style="list-style-type: none"> - Continuous improvements
Release Date: 12.07.2023 - v1.7.9	
Change Category	Explanation
Software Update	<ul style="list-style-type: none"> - Continuous improvements