

DSEWebNet® provides a web-based control and monitoring solution for DSE control modules all over the globe.

DSEWebNet® supports single or multi-set systems via a range of devices, which support a suitable internet browser. This includes Laptop / PC, Smart Phone or Tablet devices.

On-screen information presents real-time generator and system information in an easy to use format with a flexible means of data transmission through Ethernet or GSM 3G via the DSEWebNet® Gateway device. Location information can be provided by an external GPS antenna connected to the DSEWebNet® Gateway device.

#### KEY BENEFITS

- Reduced site visits and maintenance costs
- Fuel management
- Fault analysis
- Asset tracking & geofencing
- Automatic system alerts & reports
- Maximises system up-time
- Customisable graphical user interface



# DSEWebNet®

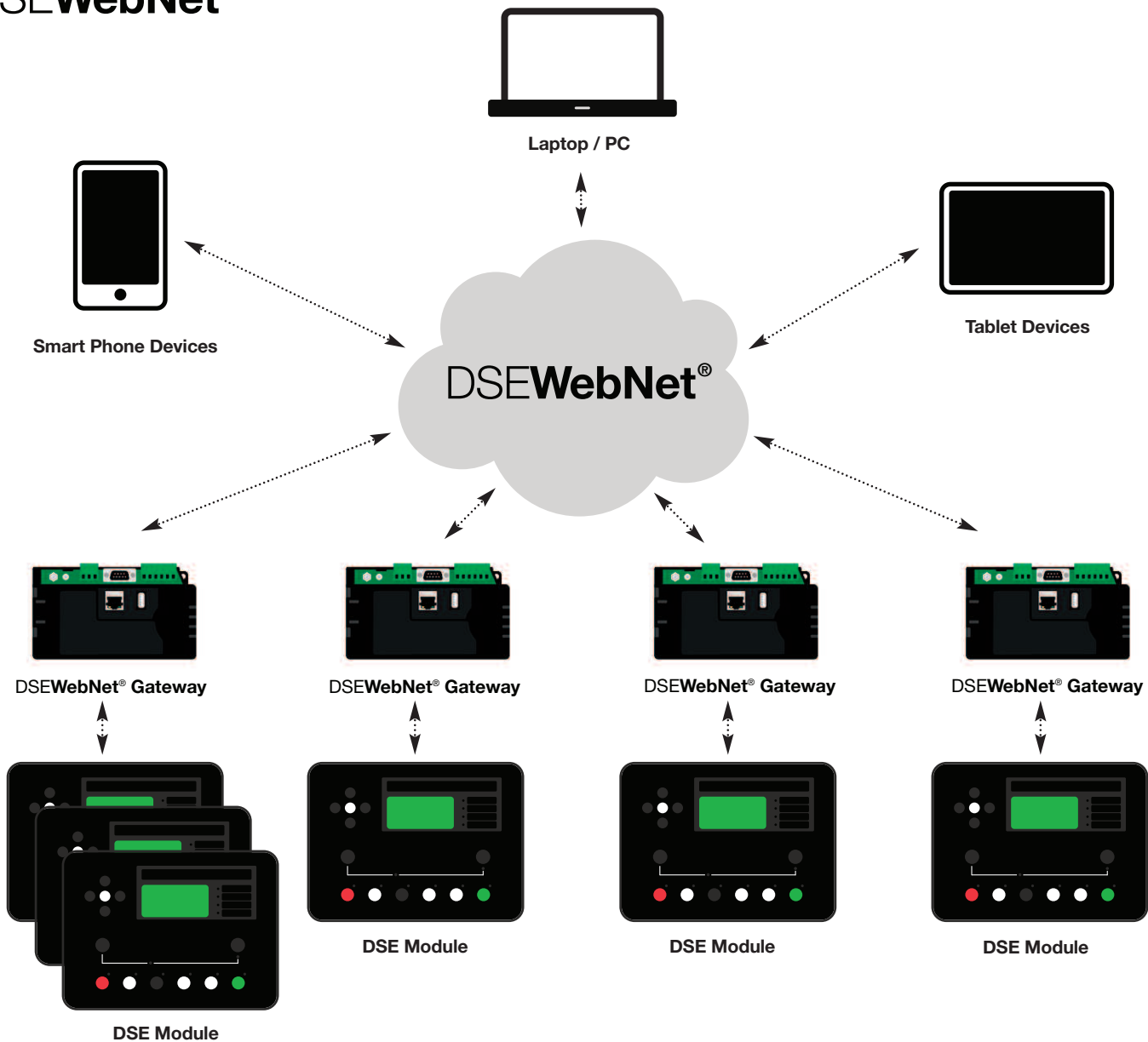
## ADVANCED COMMUNICATIONS SOLUTION



SUPPORTS COMMUNICATIONS THROUGH MULTIPLE PLATFORMS



# DSEWebNet®



## DSEWebNet® IS THE IDEAL SOLUTION FOR EFFICIENT GENSET MAINTENANCE, FLEET MANAGEMENT, ASSET TRACKING, REMOTE/PERIODIC GENSET TESTING, FUEL MANAGEMENT, FAULT ANALYSIS & MUCH MORE.

The DSEWebNet® system offers features including mapping with real-time location, instrumentation and control, event log tables and automatic system alerts which can be sent to multiple DSEWebNet® users via email and SMS.

Comprehensive on-screen information is presented in clear, graphical and numerical formats which are easy to navigate and operate.

DSEWebNet® can be utilised to maximise system up-time by offering the most effective remote management tool.

The DSEWebNet® Gateway device provides the user with full and instant access to the DSEWebNet® system. A single Gateway device can be connected to a maximum of five supported DSE controllers. This creates a vast and extensively featured remote control and monitoring solution.

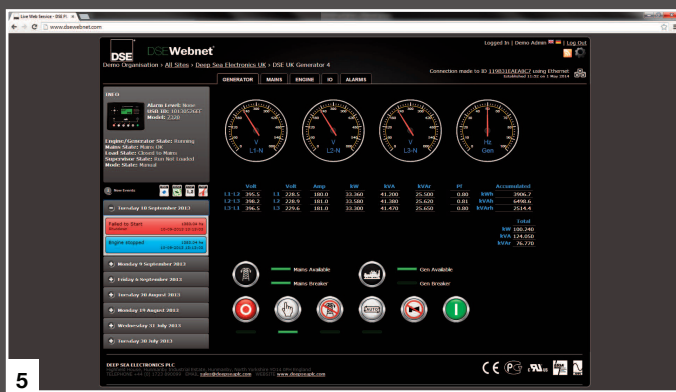
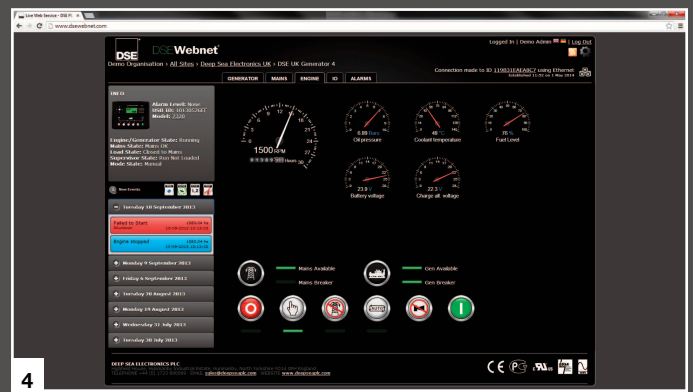
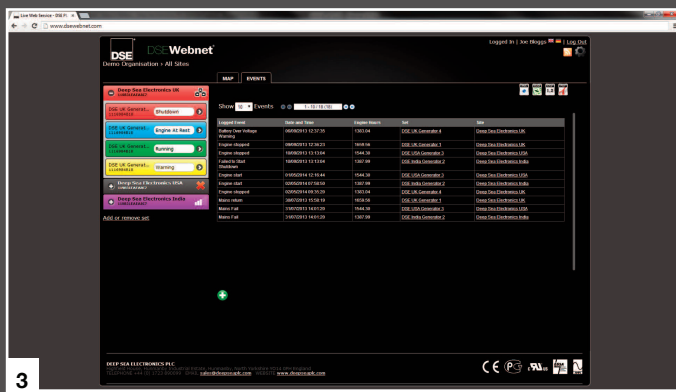
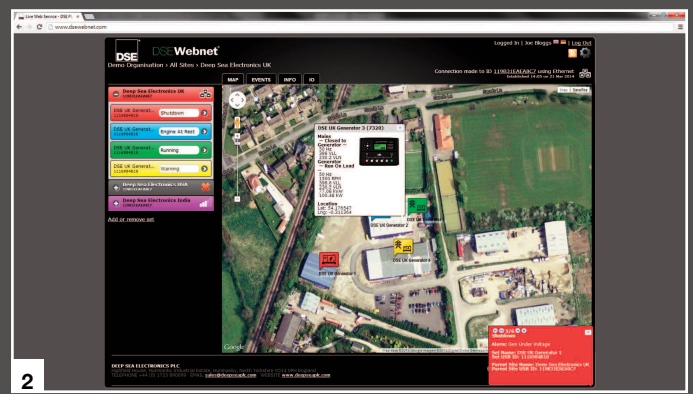
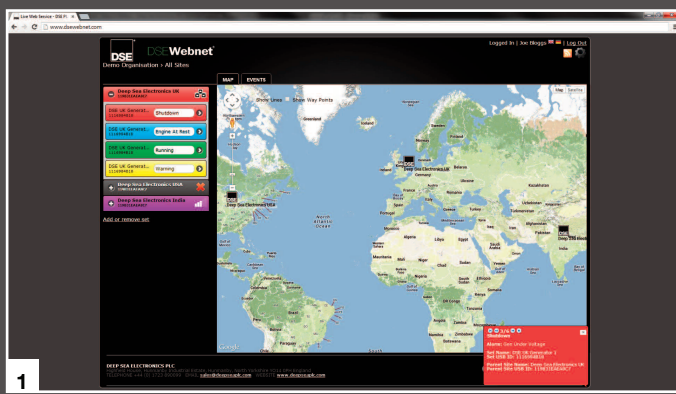
An unlimited number of DSEWebNet® users can access a single Gateway device. Additionally a single user can access up to fifty Gateway devices. To gain access to either the Gateway device or DSEWebNet®, secure login information is required. This low cost solution makes the system a secure and effective remote control and monitoring solution for multiple users and sites.

MULTIPLE AND CONFIGURABLE SCREENS ARE AVAILABLE TO SHOW A COMPREHENSIVE LIST OF ENGINE, GENERATOR, MAINS AND SYSTEM INFORMATION.

DSEWebNet® REQUIRES ONE OR MORE DSEWebNet® Gateway DEVICES CONNECTED TO SUPPORTED DSE CONTROLLERS TO UTILISE ALL OF THE AVAILABLE FEATURES.

Screen examples show the following information:

1. Global mapping shows multiple site locations
2. Aerial view of a single site location with multiple generators
3. Multiple or single site generator event recording & monitoring
4. Engine monitoring
5. Generator & mains monitoring
6. DSE controller input & output state diagnostics



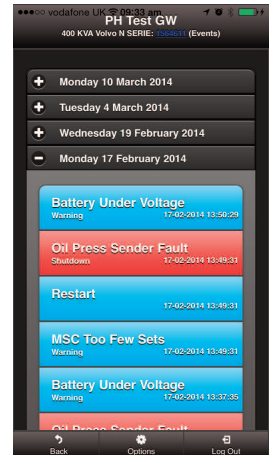
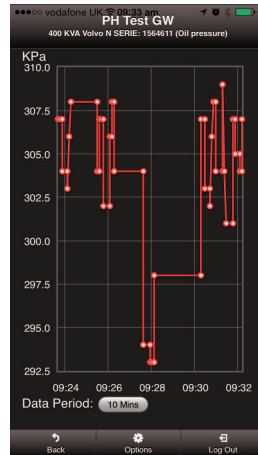
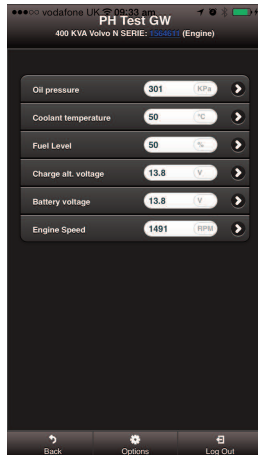
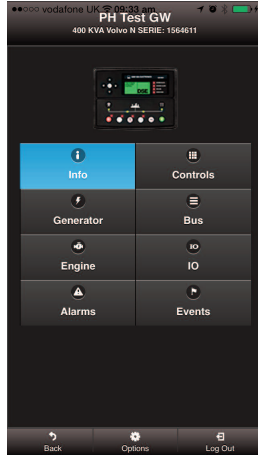
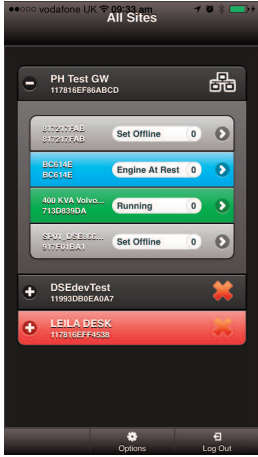
# DSEWebNet<sup>®</sup>

## SMART DEVICE APPLICATION

## ADVANCED COMMUNICATIONS SOLUTION

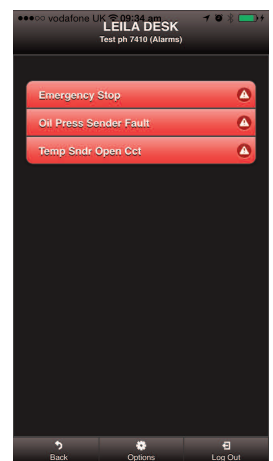
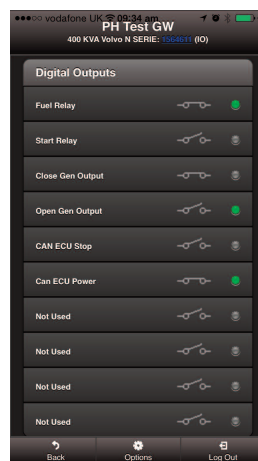
**WEB BASED CONTROL AND MONITORING SOLUTION FOR DSE CONTROL MODULES, NOW AVAILABLE IN A SMART DEVICE APPLICATION.**

The DSEWebNet Mobile Application is designed to give the ultimate remote access to your genset system – for busy engineers on the move this is a 'must have' tool!



Designed for use on smart phones and tablet devices, the software has a fast response time so that you are able to monitor and control your DSE control module, anywhere in the world.

You are able to view and control all modules that are connected to your DSEWebNet account. Realtime instrumentation, alarms, notifications, input & output status and historic data graphs, provide the highest degree of engineering/maintenance flexibility.



Apple iOS

Available for Apple and Android Platforms, please use the relevant QR code to go directly to the App Store. Available as a smart device webpage for all other platforms.



Android

**DEEP SEA ELECTRONICS PLC UK**  
 Highfield House, Hunmanby Industrial Estate, Hunmanby YO14 0PH  
**TELEPHONE** +44 (0) 1723 890099 **FACSIMILE** +44 (0) 1723 893303  
**EMAIL** sales@deepseapl.com **WEBSITE** www.deepseapl.com

**DEEP SEA ELECTRONICS INC USA**  
 3230 Williams Avenue, Rockford, IL 61101-2668 USA  
**TELEPHONE** +1 (815) 316 8706 **FACSIMILE** +1 (815) 316 8708  
**EMAIL** sales@deepseausa.com **WEBSITE** www.deepseausa.com