

OUTPUT SOURCE LIST	
0	Not used
1	RESERVED
2	RESERVED
3	Audible Alarm
4	Battery over volts warning
5	Battery under volts warning
6	CAN ECU data fail
7	CAN ECU error
8	CAN ECU fail
9	CAN ECU power
10	CAN ECU stop
11	Charge alternator shutdown
12	Charge alternator warning
13	Close Gen output
14	Close Gen output pulse
15	RESERVED
16	RESERVED
17	RESERVED
18	Common Alarm
19	Common electrical trip
20	Common Shutdown
21	Common Warning
22	RESERVED
23	RESERVED
24	RESERVED
25	RESERVED
26	RESERVED
27	RESERVED
28	RESERVED
29	Emergency stop
30	Energise to stop
31	RESERVED
32	RESERVED
33	Fuel relay
34	Gas choke on
35	Gas ignition
36	Generator Available
37	RESERVED
38	RESERVED
39	RESERVED
40	RESERVED
41	Low fuel level
42	RESERVED
43	RESERVED
44	RESERVED
45	RESERVED
46	RESERVED
47	Open Gen Output
48	Open Gen Output pulse
49	RESERVED
50	RESERVED
51	RESERVED
52	RESERVED
53	Preheat During Preheat Timer
54	Preheat Until End of Crank
55	Preheat Until End of Safety Timer
56	Preheat Until End of Warming Timer
57	Smoke limiting
58	Start relay
59	RESERVED
60	RESERVED
61	RESERVED

71xx - 02 (CAN option) only
 71xx - 01 (Magnetic pickup option) only



DIMENSIONS AND MOUNTING

For flat surface mounting in a type 1 enclosure to meet UL requirements.

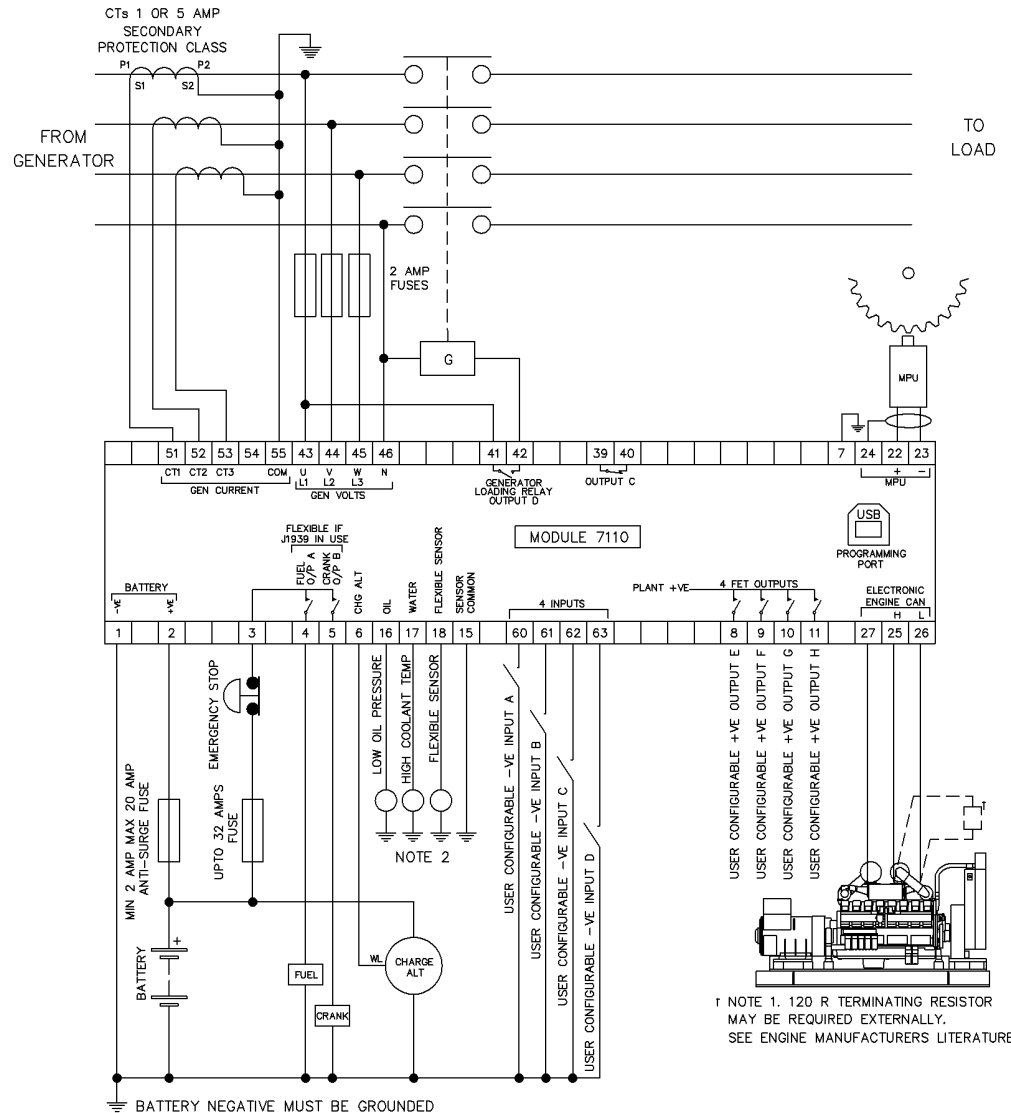
DIMENSIONS

240.0mm x 181.1mm x 41.7mm
 (9.4" x 7.1" x 1.6")

PANEL CUTOUT

220mm x 160mm
 (8.7" x 6.3")

TYPICAL WIRING DIAGRAM



TERMINALS SUITABLE FOR 22-16 AWG (0.6mm - 1.3mm) FIELD WIRING

TIGHTENING TORQUE = 0.8Nm (7lb-in)

NOTE 2

THESE GROUND CONNECTIONS MUST BE ON THE ENGINE BLOCK, AND MUST BE TO THE SENDER BODIES.

THE GROUND WIRE TO TERMINAL 15 MUST NOT BE USED TO PROVIDE A GROUND CONNECTION TO ANY OTHER DEVICE

† NOTE 1. 120 R TERMINATING RESISTOR MAY BE REQUIRED EXTERNALLY. SEE ENGINE MANUFACTURERS LITERATURE



ACCESSING THE FRONT PANEL CONFIGURATION EDITOR

Ensure the engine is at rest and the module is in STOP mode by

pressing the Stop/Reset button.

Press the Stop/Reset and Down buttons simultaneously.

The configuration icon is displayed, along with the first configurable parameter.

EDITING A PARAMETER

Press or to select the required 'page' as detailed in the configuration tables.

Press to select the next parameter or to select the previous parameter within the current page.

When viewing the parameter to be changed, press the button. The value begins to flash.

Press or to adjust the value to the required setting.

Press the save the current value, the value ceases flashing.

Press and hold the button to exit the editor, the configuration icon will be removed from the display.

NOTE:- Large values can be changed quicker by holding the or buttons for a prolonged period. For instance large timers increment in 1 second steps to 1 minute, then in 30 second steps to 1 hour, then in 30 minute steps.

NOTE:- Engine type selection is factory set for a conventional diesel engine. Other types are selected using the DSE Configuration Suite.

<p>Deep Sea Electronics Plc. Tel:+44 (0)1723 890099 Fax: +44 (0)1723 893303 LO CALL (from UK BT landlines) Telephone 0845 260 8933 Email: support@deepseapl.com Web: www.deepseapl.com</p>	<p>Deep Sea Electronics inc. Phone: +1 (815) 316-8706 Fax: +1 (815) 316- 8708 TOLL FREE (USA only) : Tel: 1 866 636 9703 Email: support@deepseausa.com Web: www.deepseausa.com</p>
---	---