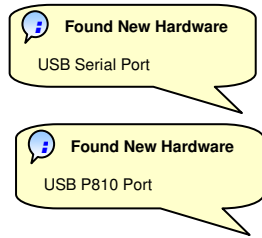




- Insert DSE softwareCD into the CD drive or download the drivers from the DSE website (www.deepseapl.com).
- Close any DSE software that may already be running on your PC.
- Connect the P810 USB interface to a PC USB port.
- After a short delay, the computer will detect the device and show two *Found New Hardware* messages, followed by the *Found New Hardware Wizard*.
- The first *Wizard* will ask whether you require *Windows Update* to find software from the internet - Select **No** then **Next** to begin the install :

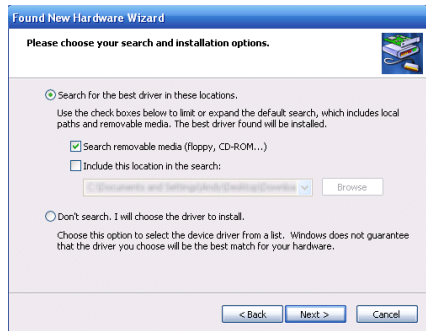


1



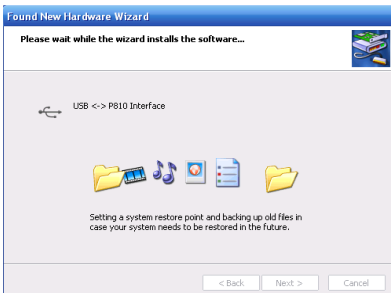
Select **Install from a list or specific location (Advanced)** then click **Next**.

2



If you are installing from the SoftwareCD, select **Search removable media (floppy, CD-ROM...)** otherwise, (if you are installing the driver downloaded from the website, select **Include this location in the search:** and **Browse** to the driver location) Click **Next**.

3



Windows will search for the drivers in the selected location once found it will continue to install the software.

4

Windows Xp may show the Windows Logo compatibility box before installing.

The software has been extensively tested on Windows Xp, so click "**Continue Anyway**".

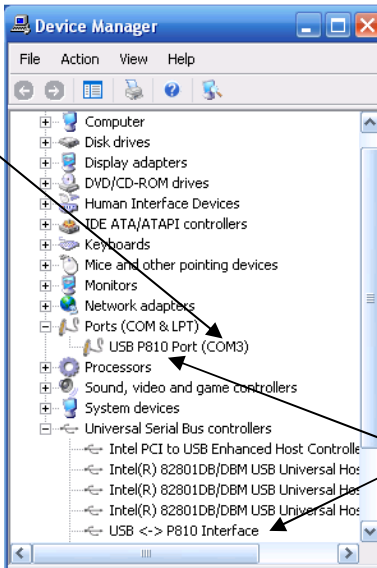
Once the USB P810 Port has been installed, the drivers for the USB Serial Port will also be installed from the same location.

Once complete, it is recommended that the PC is shutdown and restarted before the interface is used in conjunction with DSE configuration software.

Windows device manager can be used to determine which virtual port has been allocated, this may then be selected using the DSE software on the setup tab.

5

Identify which virtual comport the drivers have been installed onto.



When installation is correct and the interface is connected to the PC, the following items appear in the device manager as indicated:
USB P810 Port
USB <-> P810 Interface

6

Enter this comport number onto the *Setup* tab of the communications software.



7
You are now ready to start using your P810 USB configuration interface. If you haven't already done so, you can now install the configuration software from the SoftwareCD.

NOTES:

1. The installations details refer to Windows XP SP2, other operating systems may differ slightly.
2. For details on module configuration and the setup of the PC configuration software, you are referred to the relevant PC software operators manual.
3. To uninstall the drivers, the P810 USB interface must be connected to the PC otherwise the Windows operating system will "hide" the driver from the System Manager!

! Troubleshooting

- Occasionally USB devices are disabled by the Windows operating system, the following procedure will re-enable the device in these instances.
 - Disconnect the P810 USB interface. Wait a moment, then reconnect and try again. If you still encounter problems then :
 - Disconnect the P810 USB interface. Shutdown, then restart the PC. Reconnect the interface, then try again.
- For finding the virtual comport allocated to the 810 use Windows control panel *System / Device Manager*. If the virtual comport fails to appear in the COMPORT selection list of the PC configuration software, try reinstalling the drivers :
 - Connect the P810 USB to the PC.
 - Use Windows control panel *System / Device Manager* to uninstall the P810USB Device and USB Serial Port driver.
 - Disconnect the P810 USB interface.
 - Reinstall the drivers by following the instructions contained in this document.

Deep Sea Electronics Plc.

Tel:+44 (0)1723 890099
Fax: +44 (0)1723 893303
LO CALL (from UK BT landlines) :
Telephone 0845 260 8933
Email: support@deepseapl.com
Web: www.deepseapl.com

Deep Sea Electronics inc.

Phone: +1 (815) 316-8706
Fax: +1 (815) 316-8708
TOLL FREE (USA only) : Tel: 1
866 636 9703
Email: dsesales@deepseausa.com
Web: www.deepseausa.com

Deep Sea Electronics Plc. (Far East)

Tel:+66 2 670 6228
Fax: +66 2 678 3028
Email: support@deepseapl.com
Web: www.deepseapl.com