



## DEEP SEA ELECTRONICS DSE103 MKII INSTALLATION INSTRUCTION

### SETTING OF NOMINAL SPEED

- With the DSE103 connected, run the engine at nominal speed. connect the 'Set Nominal Speed' input to battery negative to set.

### ADJUSTMENT OF TRIP POINTS

- Turn the pre-set potentiometers to set the trip point. The factory setting for Trip 1 is 10% to 50% of nominal engine speed and the default setting for Trip 2 is 90% to 140% of nominal engine speed . The range is adjusted from 0% to 400% of nominal engine speed via the DSE Configuration Suite Lite PC Software.
- Turn the pre-set potentiometers clockwise to increase the appropriate trip point, turn it anti-clockwise to decrease the appropriate trip point.
- The LED illuminate when the trip has been achieved.

### METER CALIBRATION

- Turn the pre-set potentiometers to set the meter calibration. The meter output is scaled to match the optional tachometer (0 mA to 1 mA range).
- Turn the potentiometer clockwise to increase the meter reading, turn the potentiometer anti-clockwise to decrease the meter reading.

### PC CONFIGURATION

- PC configuration is achieved using the P890 interface and DSE Configuration Suite Lite PC Software.
- For further information on PC Configuration, please refer to DSE publication: **057-136 103 Speed Switch Software Manual**

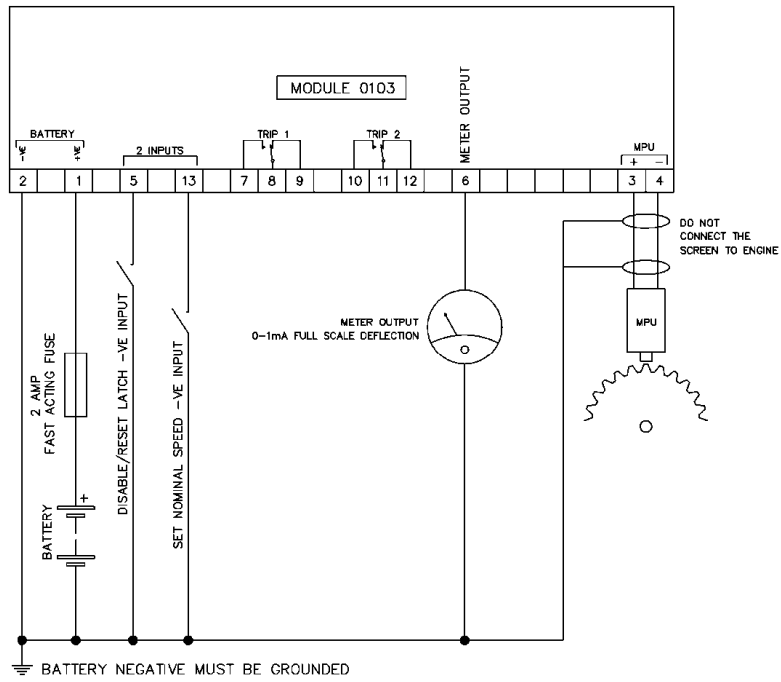
#### Deep Sea Electronics Plc.

Tel:+44 (0)1723 890099  
Fax: +44 (0)1723 893303  
Email: support@deepseapl.com  
Web: www.deepseapl.com

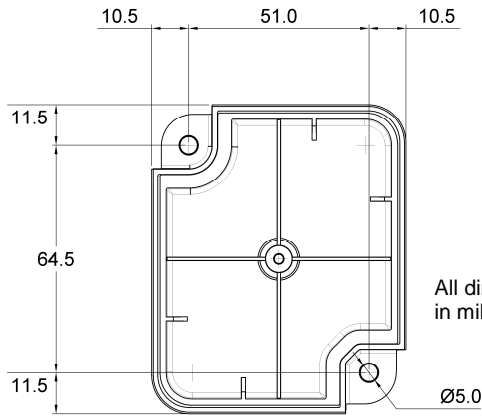
#### Deep Sea Electronics Inc.

Tel: +1 (815) 316-8706  
Fax: +1 (815) 316- 8708  
TOLL FREE (USA only)  
Tel: +1 866 636 9703  
Email: support@deepseausa.com  
Web: www.deepseausa.com

# TYPICAL WIRING DIAGRAM



A larger version of this diagram can be found in the product's operators manual.



**DIMENSIONS**  
 87.5 mm x 72.0 mm x 26.0 mm  
 (3.4" x 2.8" x 1.0")

**MOUNTING**  
 Bolt & Nut Size: M4  
 Torque Rating: 0.60 Nm to 0.70 Nm

All dimensions in millimetres